

Modular Trailer Mounted Buildings – 48 Bed "Jack & Jill" Dorm

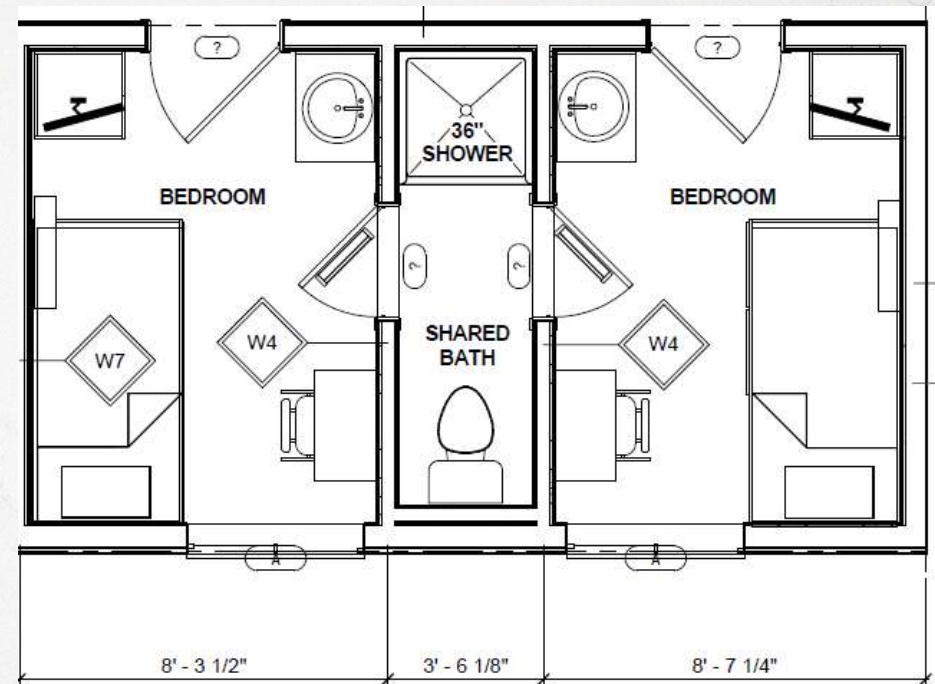
General

- (42) 48 Bed "Jack & Jill" Dorms available
- Dorm Building w/ Shared Bathrooms
- Each Dorm includes
 - 12 w/ Propane water heaters
 - 36 w/ Elec Water Heaters
- Total Footprint - 254'6" x 29'8.5" Total (7,560 SQ. FT.)
- 8 Modules 66' x 11'10" Ea
- Electrical Requirements – • 2 400 amp 120/208 volt 3 phase electrical connection or 2 200 amp 480 volt 3 phase connections with unit transformers
- Require installation of roof & floor sections and endwalls to form interior corridor & end walls
 - Owns materials for 36 buildings
- Does not include steps and landings

Bedrooms

- 102 SF (Apx 7'10" x 11'10")
- Bed w/ Mattress, Desk, Sink, Wardrobe, TV w/ DVD Player

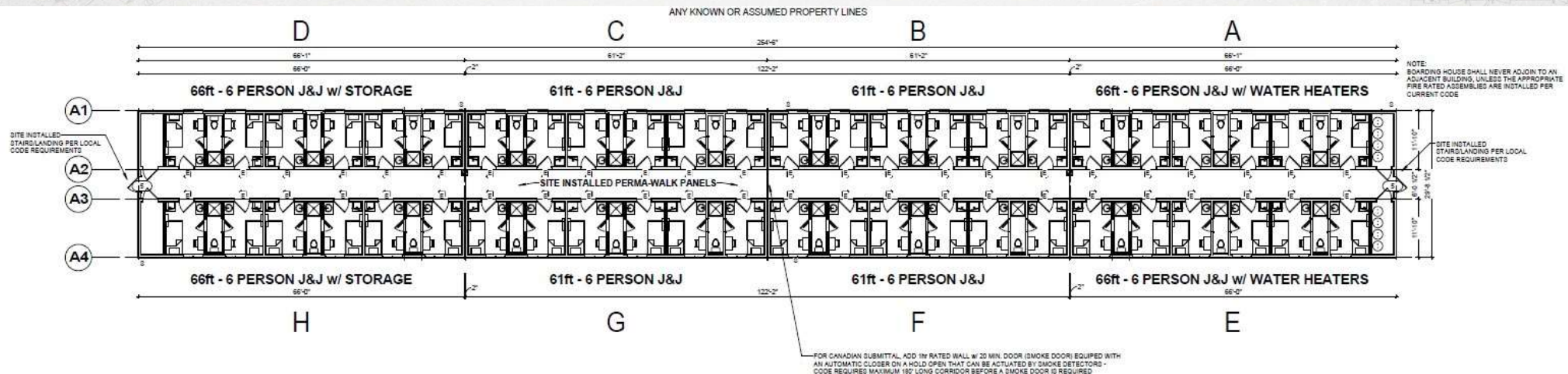
MANUFACTURED TO COLD WEATHER SPEC



Bedroom Layout

Modular Trailer Mounted Buildings – 48 Bed “Jack & Jill” Dorm

MANUFACTURED TO COLD WEATHER SPEC



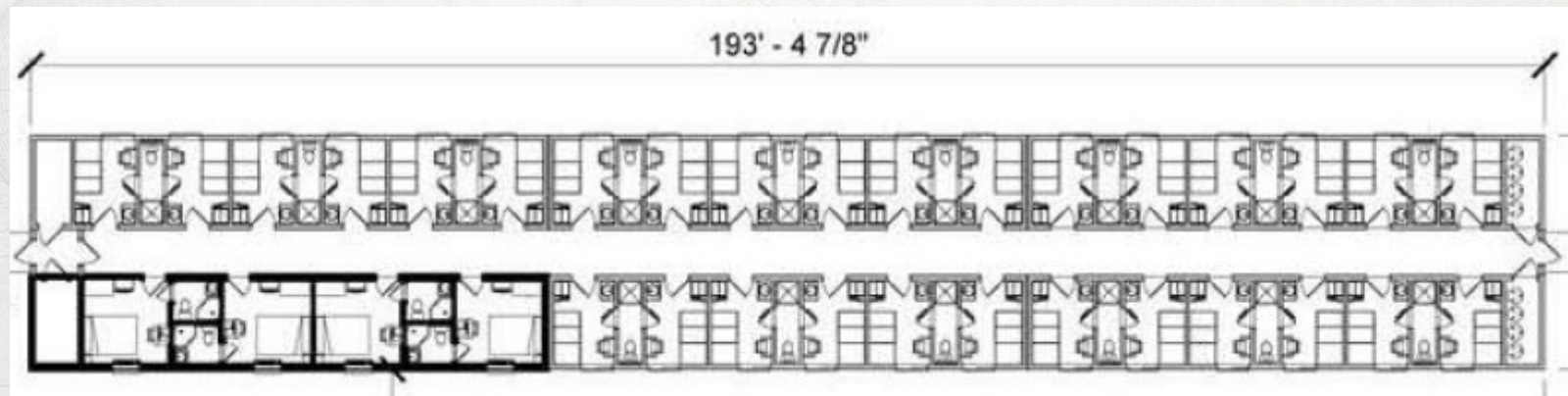
Roof & Floor Sections

Modular Trailer Mounted Buildings– 34 Bed Dorm

MANUFACTURED TO COLD WEATHER SPEC

General

- (4) “34 Bed Dorms” Available
- Dorm Building
 - 4 Rooms w Private Bathroom
 - 30 Rooms w Shared Bathroom
- Total Footprint – 193’5” x 29’10” (7,472 SQ. FT).
- 6 Modules Apx. 66’ x 11’10” Ea
- Electrical Requirements – See 48 Bed Dorm
- Require installation of roof & floor sections to form interior corridor & end walls
 - Owns materials for 36 buildings
- Does not include steps and landings



Modular Trailer Mounted Buildings – 21 Box Kitchen/Dining Facility

General

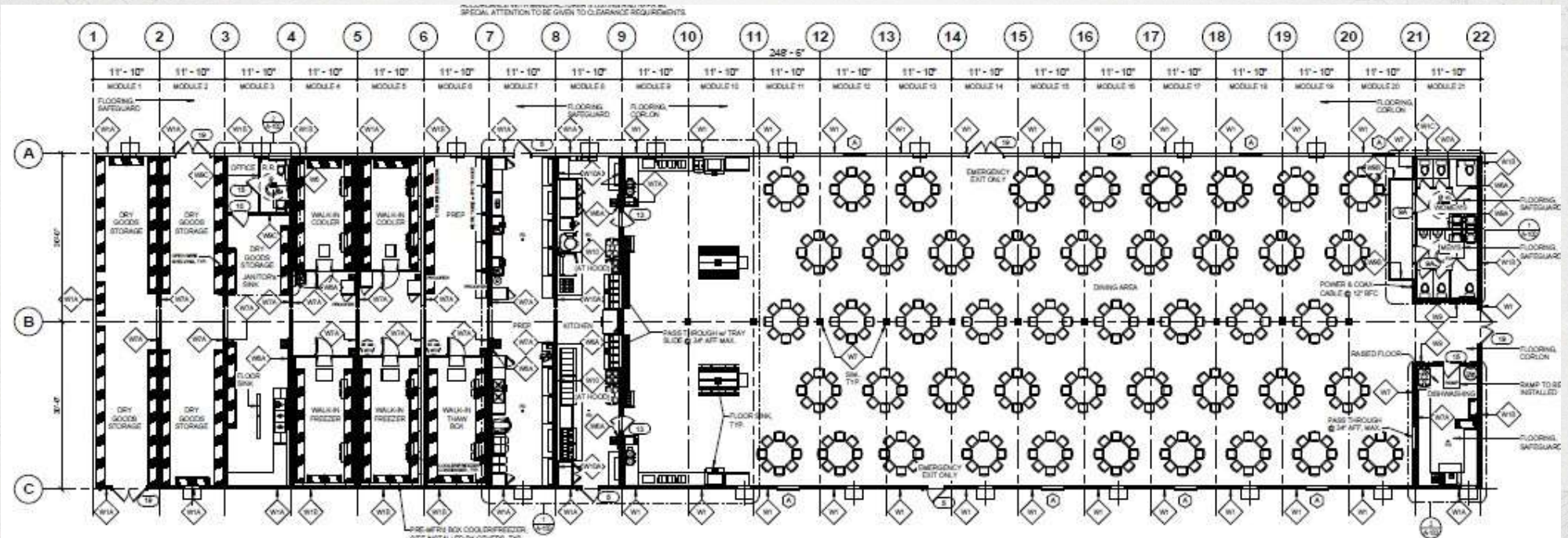
- (3) 21 Box Kitchen/Dining Facilities Available
- 21 Modules 60' x 11'10" Ea. (Can be reduced by reducing Dining Area)
- Total Kitchen Footprint – 248'6" x 60' (14,936 SF).
 - Dining: 8,433SF
 - Kitchen 1,422SF
 - Dishwashing: 269 SF
 - Storage: 4,155SF
 - Office: 123 SF
 - Restrooms: 534SF
 - Total: 14,936
- Electrical Requirements –
- Built-in equipment included (Freezer/Refrigerator, Fryer, Griddle, etc.) – To be confirmed with onsite inspection
- Loose equipment not included (Drinks machine, mixer, etc.) To be confirmed with onsite inspection
- Does not include steps and landings

MANUFACTURED TO COLD WEATHER SPEC



Modular Trailer Mounted Buildings – 21 Box Kitchen/Dining Facility

MANUFACTURED TO COLD WEATHER SPEC



21-Box Dining Facility

21-Box Dining Facility – Enlarged Kitchen Plan

Modular Trailer Mounted Buildings – Recreation Facility

MANUFACTURED TO COLD WEATHER SPEC

General

- (4) Recreation Facilities Available
- 14 Modules 60' x 11'10" Each
- Total Footprint for each – 165'8" x 60' (9,940 SF).
 - Assembly: 2,759
 - Laundry: 1,059SF + 1,388SF
 - Media Room: 1,628SF
 - Storage: 611 SF
 - Restrooms: 92SF
 - Chapel: 407SF
 - Internet Cafe: 449SF
 - Barber Shop: 221SF
- Electrical Requirements –
- Included Equipment – Unknown, to be confirmed with onsite inspection
- Does not include steps and landings

MANUFACTURED TO COLD WEATHER SPEC

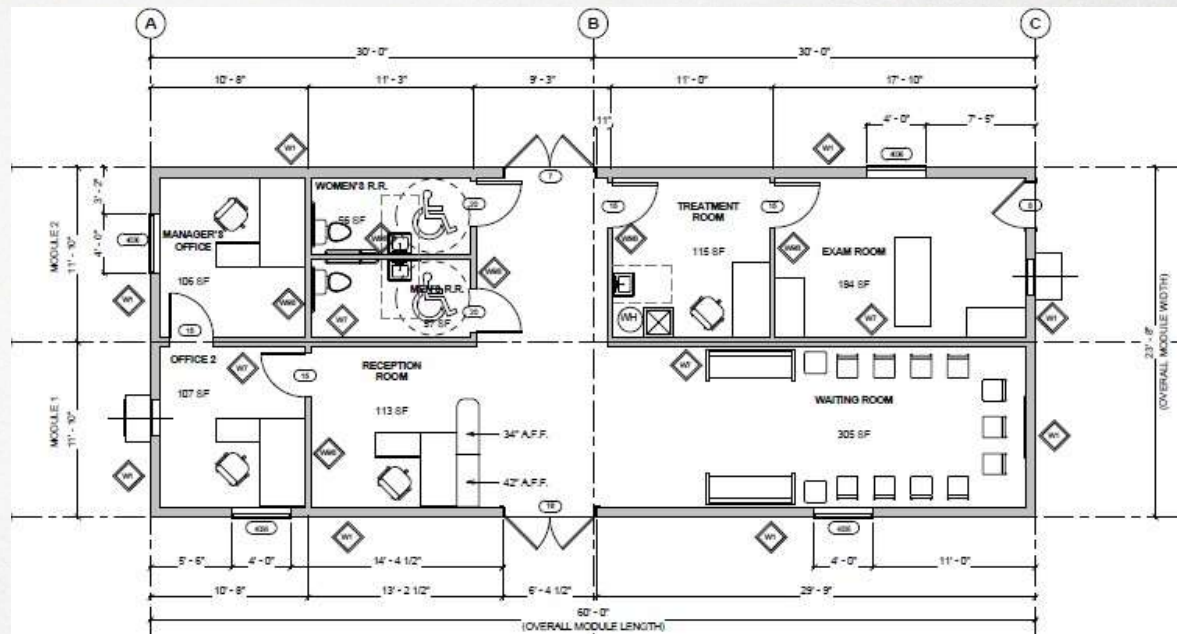


Modular Trailer Mounted Buildings – Office/Infirmary

General

- (5) Office Infirmaries Available
- 2 Modules 60' x 11'10" Each
- Total Footprint for each– 23'8" x 60' (1,309 SF).
 - Reception 113 SF
 - Waiting 305 SF
 - Office 1: 106 SF
 - Office 2: 107 SF
 - Restrooms: 113 SF
 - Treatment Room: 184 SF
 - Exam 184: 449SF
- Electrical Requirements – 200 amp 120/208 3 phase electrical hook up
- Included Equipment – Unknown, to be confirmed with onsite inspection
- Does not include steps and landings

MANUFACTURED TO COLD WEATHER SPEC



Modular Trailer Mounted Buildings – Stand Alone Laundry

MANUFACTURED TO COLD WEATHER SPEC

General

- (4) Stand Alone Laundry Buildings Available
- 1 Module 60' x 14' Each
- Total Footprint for each – 14' x 60' (760 SF)
- Electrical Requirements – 400 amp 120/208 volt
3 phase electrical connection
- Included Equipment – Washers/Dryers
- Does not include steps and landings

Modular Buildings – Guard Shacks

General

- (7) Guard Shack Buildings Available
- 1 Module
- Total Footprint for each – (200 SF)
- Electrical Requirements – 400 amp 120/208 volt
3 phase electrical connection
- Does not include steps and landings

MANUFACTURED TO COLD WEATHER SPEC

